

Joist to Joist Connections - Open Web

PRODUCT CODES HIGHLIGHTED ARE BASED ON 45° SKEW VERSION L/H ORIENTATION

L/R indicates L – L/H Orientation, R – R/H Orientation

Joist Depth	Product Code	Dimensions			Fixings			Safe working loads (kN)		
		W	H	B	Top	Face	Joist	Uplift	Long Term	Medium Term
TOP FIX										
220	30TL-75/219	46	220	50	4	8	3	0.8	3.75	3.75
220	45TL-75/219	46	220	50	4	8	3	0.8	6.15	6.15
220	60TL-75/219	46	220	50	4	8	3	0.8	6.15	6.15
220	75TL-75/219	46	220	50	4	8	3	0.8	6.15	6.15

Hangers shown above are for 72mm wide joists, TL hangers are available in widths of 50, 75 and 100mm TL series are available to suit all depths of Open Web joists.

UZ-Clip

The Universal Z-Clip is a multi functional connector designed to locate and connect flat noggings between Open Web joists at perimeter edges to support flooring or non-load bearing partitions.

ADVANTAGES

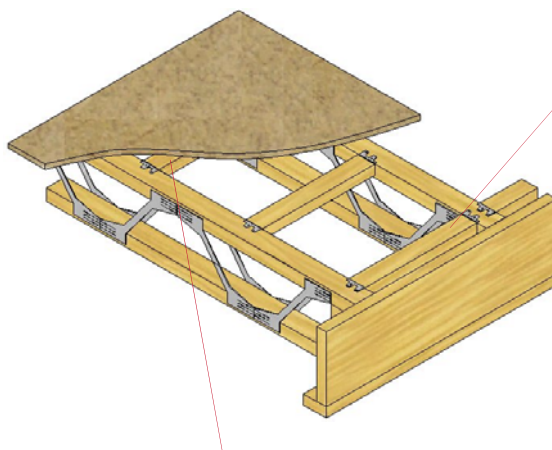
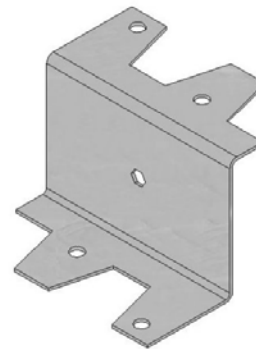
- Adjacent noggings can be aligned (UZ-Clips placed opposite each other)
- Available to suit 35, 38 & 47mm deep noggings

MATERIAL

- 0.9mm galvanised mild steel – G275

PERFORMANCE

- Safe working load 1.5 kN short term



UZ-Clips supporting perimeter noggings

UZ-Clips supporting partition noggings under non-load bearing partitions

GENERAL NOTES

1. All safe working loads derived from tests witnessed and verified by TimberSolve Limited
2. To achieve stated safe working loads nail as schedule.
3. Use only 3.75 x 30mm sherardised square twist nails